



USER-CENTRIC PARADIGM FOR SEAMLESS
MOBILITY IN FUTURE INTERNET



Towards Always Best Connected – The PERIMETER Way

Markus Fiedler

markus.fiedler@bth.se

**Blekinge Institute of Technology
School of Computing, Karlskrona, Sweden**



Always Best Connected?



→ Why care?

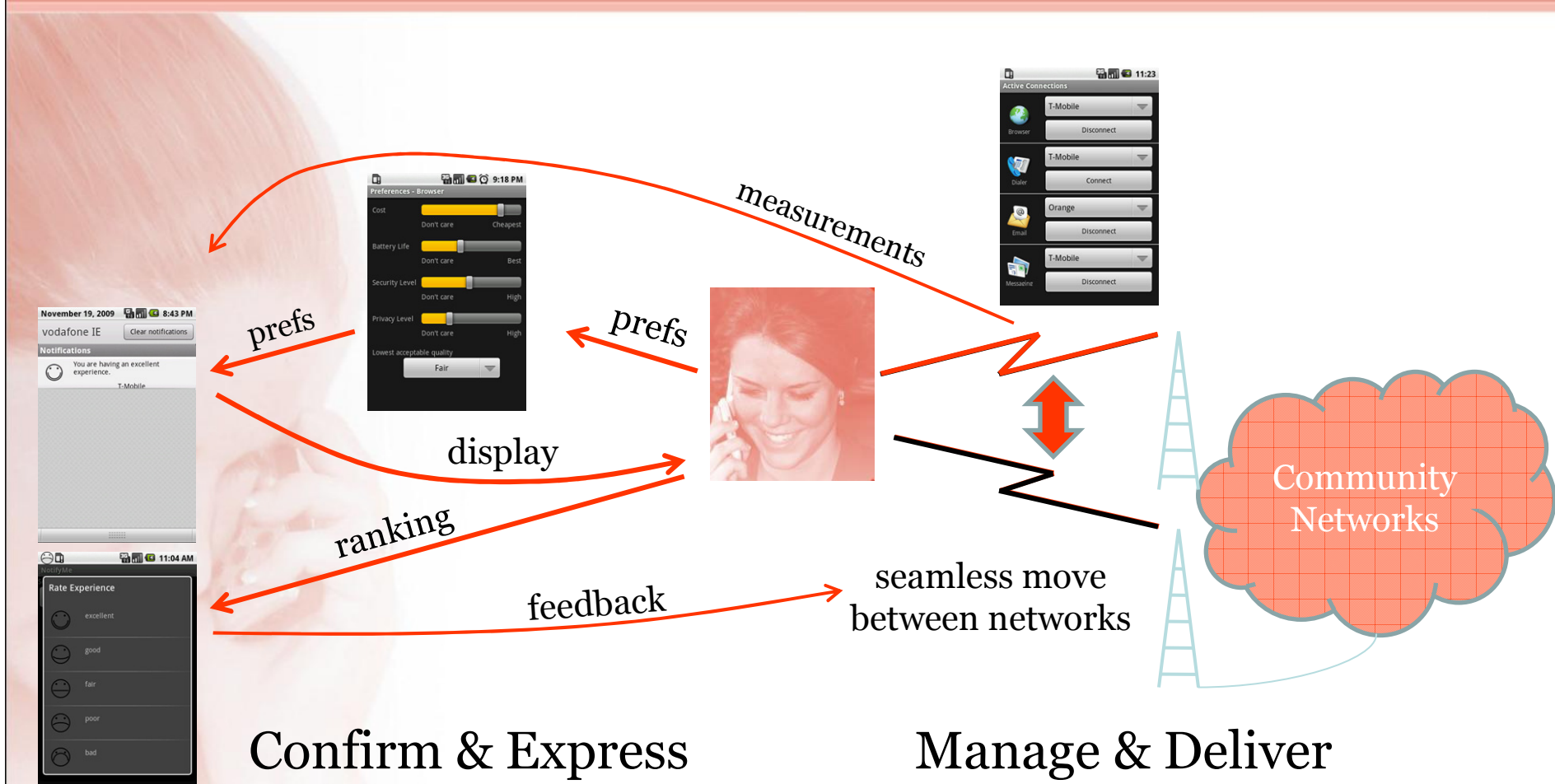
- ↘ Out of coverage
 - ↘ Network overload
 - ↘ Suboptimal network chosen
- } Bad Quality of Experience (QoE)
= Risk of churn

→ Who is in charge?

- ↘ Operator? (Owns customers)
- ↘ Service provider? (Service-specific)
- ↘ Currently the user itself
 - Manual switch
 - Break-before-make?

- New paradigm of user centricity
 - ↘ Switch networks on behalf of the user
 - ↘ No loss of time and functionality
 - Make-before-break
 - ↘ No tedious configuration
- User remains Always Best Connected
 - ↘ Has the possibility to express what is best in form of preferences and opinions
 - ↘ Privacy-preserved authentication, authorisation and accounting with reputation
- New business opportunity: meta-operator

The PERIMETER Way



Confirm & Express

Manage & Deliver

My Quality of Experience

→ User point of view

↘ Steps: Preferences – display – rating (eventually)

- Tested with positive outcome 😊

↘ Accompanied by measurements

- QoS → QoE

↘ Reputation

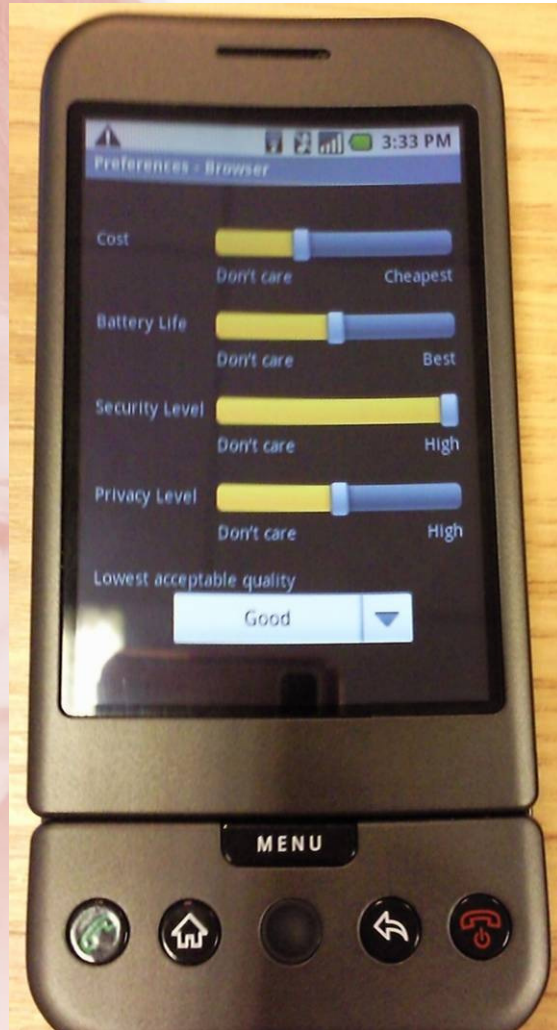
→ Generates essential feedback for the network selection process

↘ Fight insufficient quality and outages

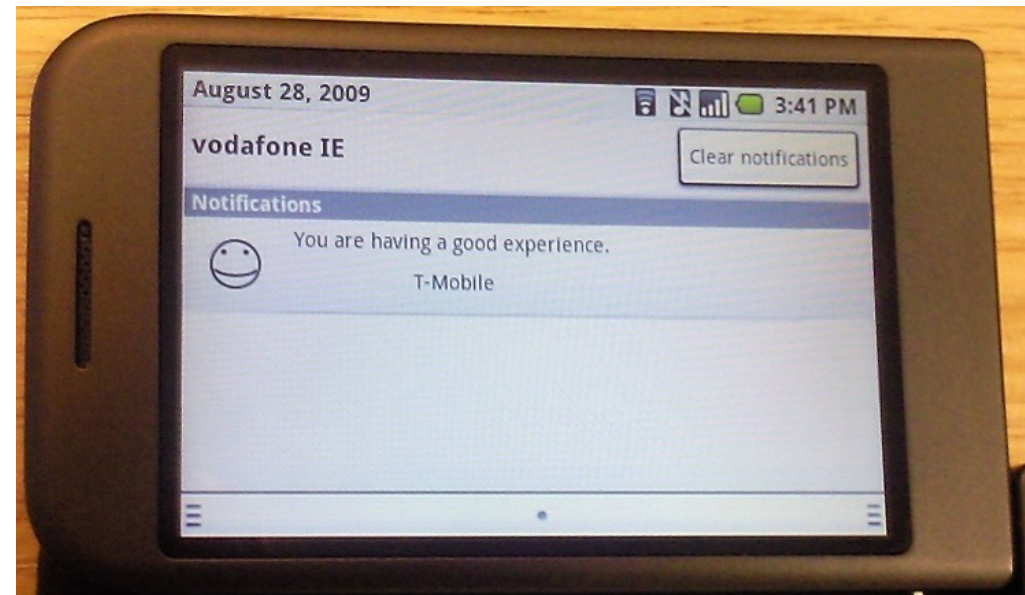
↘ Handle updates of user preferences

↘ Self-learning component

PERIMETER GUI



User specifies preferences



User feedback from PERIMETER

Manage & Deliver My QoE



→ QoE Data Collection

↳ GPD = Generic Performance Data

→ QoE Data Processing Function

↳ QoED = Quality of Experience Descriptor

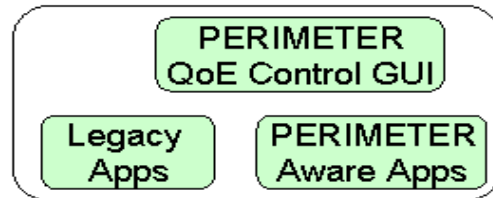
→ Awareness and Decision Functions

→ Looking backstage...

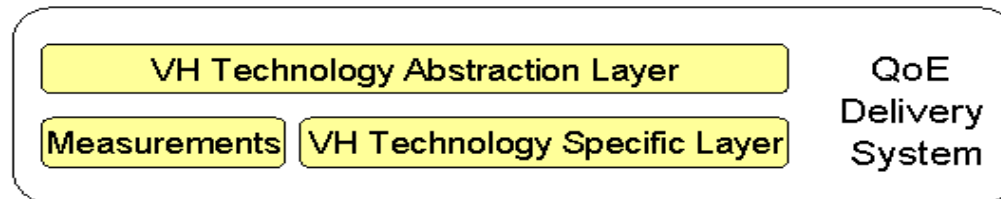
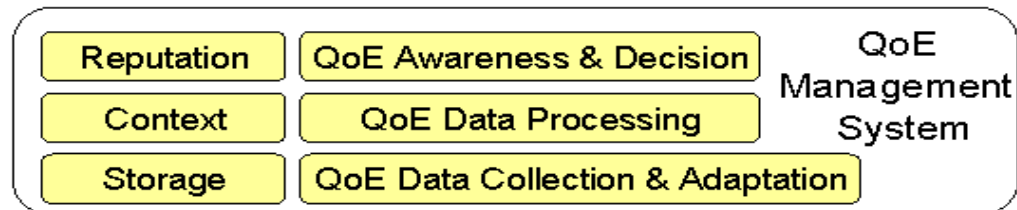
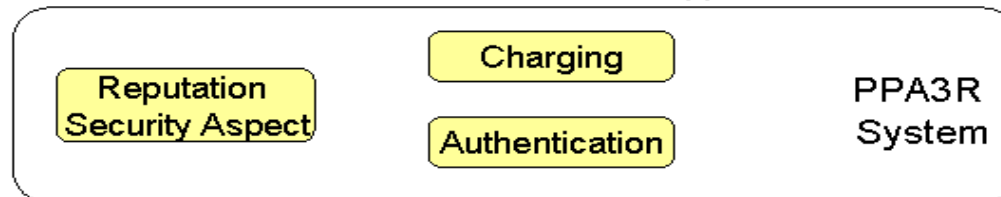
PERIMETER System



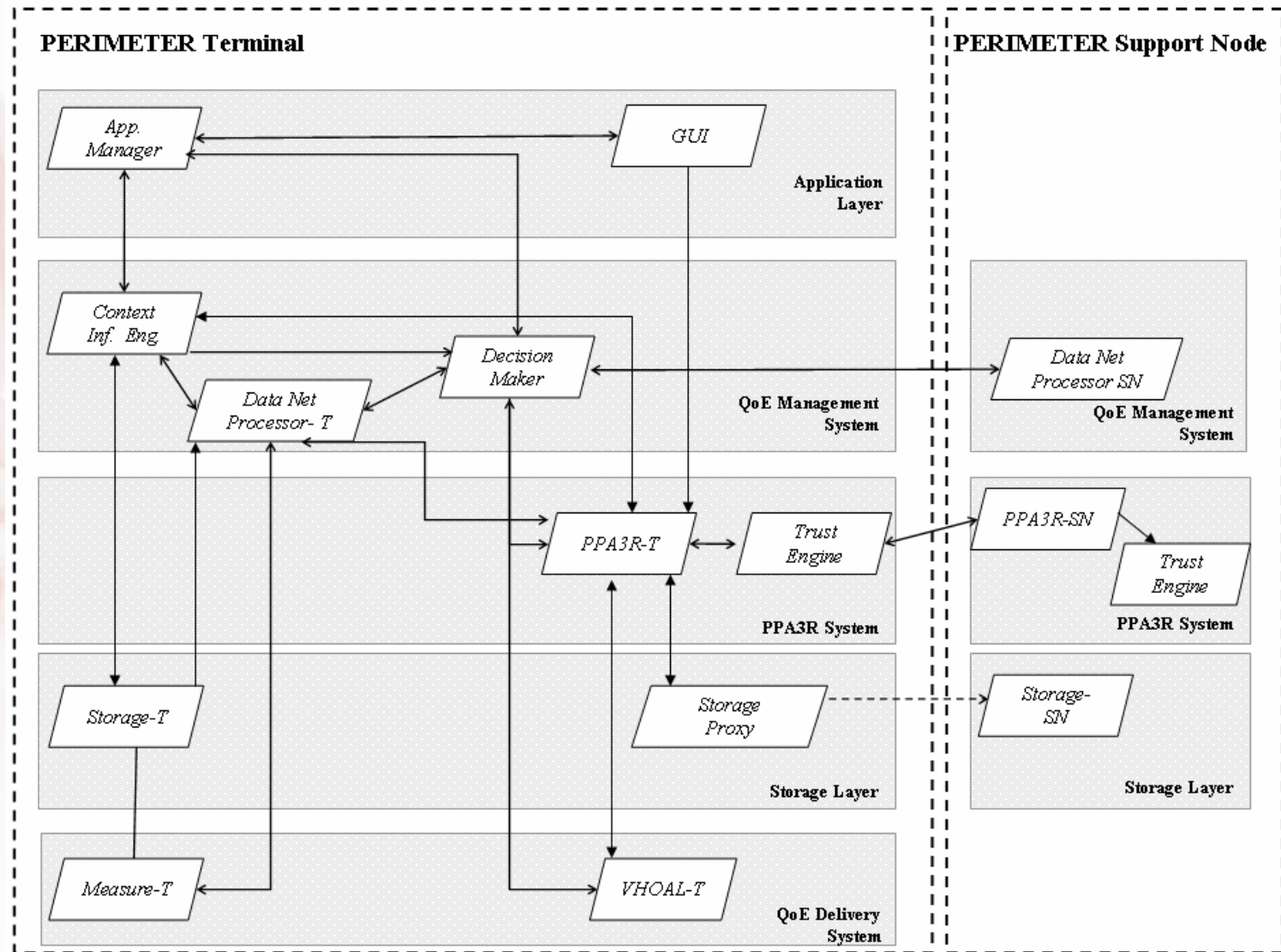
Terminal Specific
Functional Entities



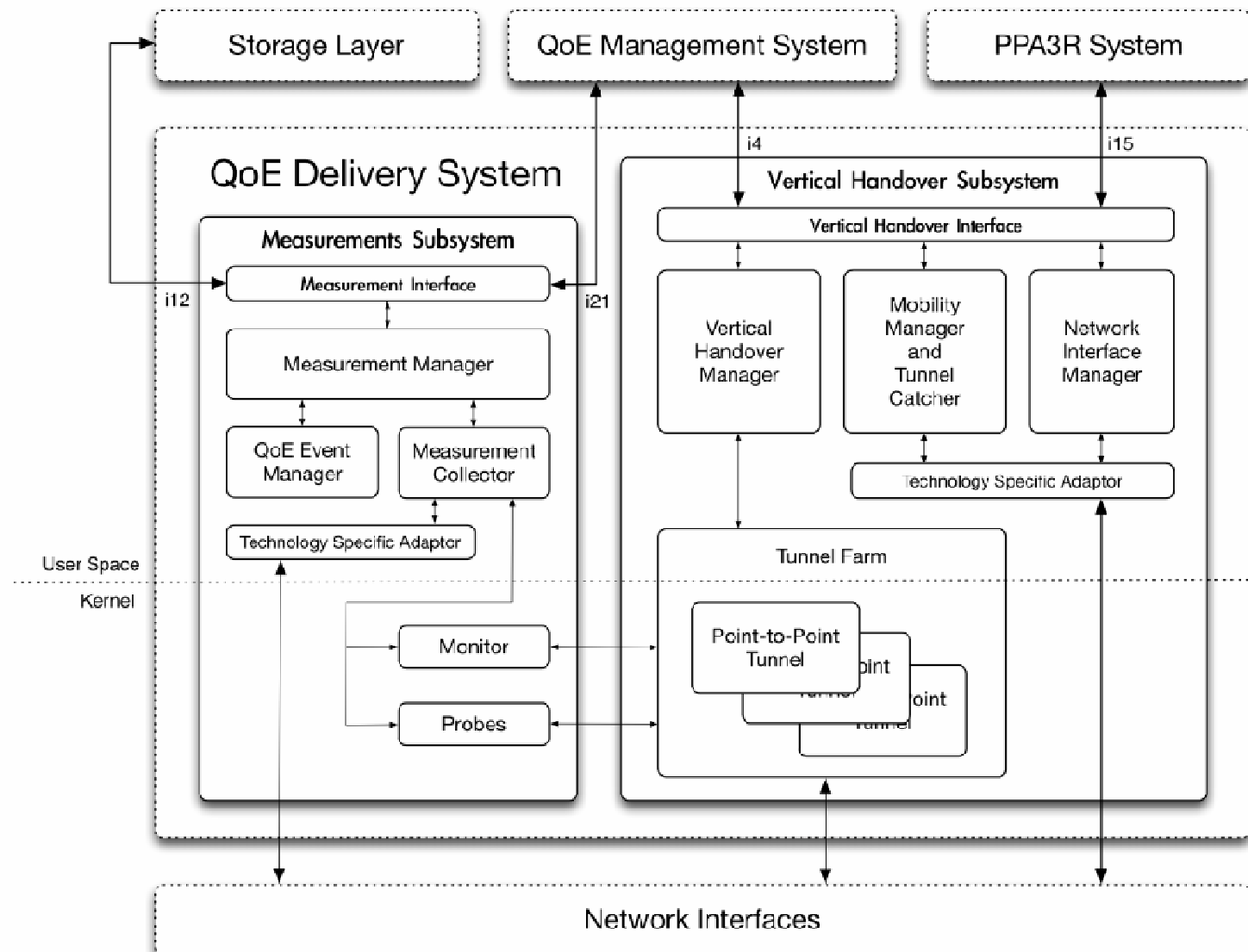
PERIMETER Terminals
& Support Nodes



The PERIMETER Geek Corner



The PERIMETER Geek Corner



→ Usage of facilities... how to proceed?

↘ Make PERIMETER available to other projects

- For legacy and PERIMETER-aware applications

↘ Use other projects' approaches and facilities, e.g.

- Panlab's testbed infrastructure
- Federica slices
- Living Labs

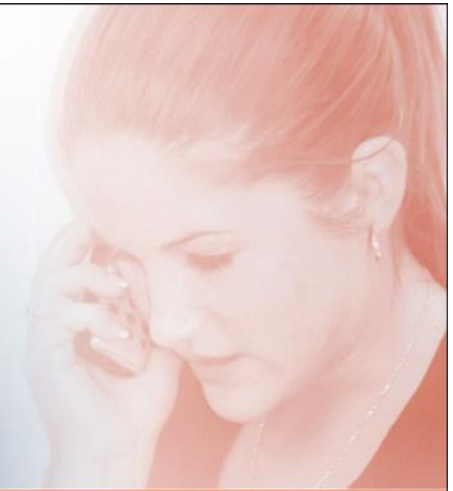
↘ Need to interface...

→ Proposal: "Test fair" @ Valencia

- ↘ Demo and test facilities as far as available
- ↘ Hands-on presentation of interfaces
- ↘ Organisation of cross-project test sessions



USER-CENTRIC PARADIGM FOR SEAMLESS
MOBILITY IN FUTURE INTERNET



Thank you...

Markus Fiedler
markus.fiedler@bth.se

Website: www.ict-perimeter.eu**

** Funded by the EU ICT FP7 project, PERIMETER (Project No.: 224024)



UNIVERSITÉ
DE GENÈVE



Waterford Institute of Technology

