

# 2nd FI-PPP Usage Areas Workshop

## CULTURAL HERITAGE



- It is the testimony of our shared past and the root of our identity.
- It is a common and distinctive asset for the EU.
- It is a non-transferable resource, generator of wealth along Europe.

**New digital tools, methodologies and standards to allow the comprehensive management of historic sites to ensure their sustainability.**

## Innovative Internet Functionalities and Technologies

- Create, manage and deploy 3D data and information.
- Digital technologies and decentralized communication networks interconnected.

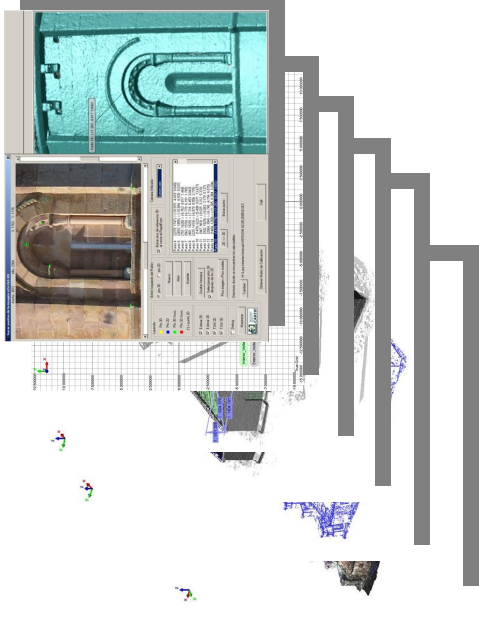
# 2nd FI-PPP Usage Areas Workshop

## CULTURAL HERITAGE

### Functionalities Supported by the Core Platform

- **Different levels of information depending on users**  
(from general public to technical expertise)
- **Different services provided**  
(for free or paying)

**Digital accessibility: inclusion of all sectors of population**



### Experimentation Environment

- **Common representative group of monuments along the EU as subject for content and services to be performed.**

# 2nd FI-PPP Usage Areas Workshop

## CULTURAL HERITAGE



### Potential Role of CARTIF in the FI-PPP

- Focus: application of ICT to respond to multiple demands of the industrial sectors.
- Our role is linked to the following items regarding CH:
  - CARTIF is member of the Cultural Heritage Strategic Line (LEPC) within the Spanish Construction Technology Platform (PTEC).
  - CARTIF coordinates the Horizontal line 4: Socio-Economic Strategies and Tools of the Focus Area of Cultural Heritage (FACH), within the European Construction Technology Platform (ECTP).
  - CARTIF is member of the AR&PA International Forum, dedicated to increase the role of Cultural Heritage in the Economy.
  - Our expertise makes scientific and technical publications, as well as patents.